

# SAN FRANCISCO BAY SECTION

## California Water Environment Association

# Inkspot



September 2008

## GREETINGS FROM THE PRESIDENT...

Summer's almost over, so enjoy the warm weather while you can.

Our last dinner meeting was held on August 7, where CCCSD's Bill Echols provided a presentation on CCCSD's 2007 Collection System of the Year. Thanks to Bill for his presentation that highlighted the activities and procedures that set them apart.

Please join us at the **Joint SFBS/Redwood Empire dinner meeting** at Scott's Seafood in Oakland on September 11 (**not** the first Thursday as usual). There will also be a **tour of the USS Hornet** before the meeting. See the flier in this newsletter for the details.

The SFBS Collections System Committee put on another successful golf tournament on July 25 and the O&M Committee had a full house for the SFPUC Oceanside Water Pollution Plant tour on August 20. Thanks to all of the volunteers and participants at both events.

The big news is that the awards nominations are open. Please see the flier in this newsletter and start to prepare the nominations!

The SFBS and CWEA Board are both soliciting nominees for the open **Board positions**. The SFBS is looking for nominees for Second Year Director (contact any Board member for details) while CWEA is accepting nominations through December 17 for Vice President from the North, Director at-large from the North, and WEF Director from the North (as well as Director at-large from the South).

Are you ready for **Computer Based Testing**? CWEA will begin accepting applications for the January-March 2009 testing window this fall. Applications will be

**Printing Courtesy of Black & Veatch**

available by September 1.

At the June Board Meeting, the CWEA Board approved the following fee increases, all effective July 1, 2008: CWEA dues increased \$22 to a total of \$132 (\$12 local section + \$120 state dues), CWEA Certification Application fees increased by \$10, and CWEA Renewal/Recertification fees increased by \$5. The Board also established the following member benefits: free access to CWEA's certification study guides online (beginning in late summer/early fall), free access to CWEA's six manuals online, and free access to a new manual on wastewater utility branding due out this year. And don't forget that CWEA members enjoy the member rate for CA/NV AWWA activities.

**Wastewater operators**, take note: draft amendments to the State's Operator Certification Program regulations are expected to be publicly available on August 28 ([http://www.waterboards.ca.gov/water\\_issues/programs/operator\\_certification](http://www.waterboards.ca.gov/water_issues/programs/operator_certification)).

There are too many upcoming training and social events over the next two months to summarize here, so please see the calendar towards the end of the newsletter and refer to the fliers included in this newsletter and the SFBS and CWEA web sites for additional details. Have a great month!

Kevin O'Toole, 2008 SFBS President

### Important Stuff:

**Sept 3** CS Committee Seminar, Foster City

**Sept 7-9** NRTC, Sparks, Nevada

**Sept 11** SFBS/RES Joint Dinner Meeting, Scotts, Oakland

**Sept 25-26** Tri-State Seminar, Primm, Nevada

## Ramblings from the Editor...

Greetings!

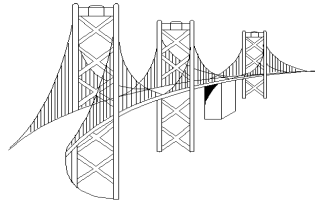
Well another summer is coming to wraps. Kids are all going back to school, and mine (YIKES!!!) are entering the sixth grade. WOW!! Sixth grade? Already? They will be going to a new school. Back when we were in school; we didn't hit middle school 'till seventh grade (well most of us I believe). The boys are excited as this is a new adventure for them. I am sure they will have fun.

Don't forget about Pollution Prevention Week, September 15-22. Many agencies, including RSD, are holding events for Mercury Thermometer Exchange, recyclables drop off, etc. Please contact the BAPPG member in your agency or organization for more information. You can also visit the Baywise web site for specific locations for the exchange events and other useful pollution prevention information (<http://www.baywise.org/>).

One more bit of good news. The District just implemented a new ordinance; Sewer Lateral Condition Ordinance. This ordinance provides triggers for the inspection of a private sewer lateral. The trigger is not just the sale of a home, but also includes change in use, addition of fixtures, and the one that I like; if the District feels public health may be at risk. The District also implemented a grant program to help out with the expense of replacing the lateral. The grant program is mainly for voluntary lateral condition improvement, not for those in the "sale" mode. The grant program went into effect in June and the Ordinance in August. When we have some experience on the success and "wish we did that" I will be most happy to share. I would also like to thank E.J. Shalaby with the West County Wastewater District for allowing us to borrow a great program and ordinance to use in Rodeo.

Hope you all have a great day!

Steve



SAN FRANCISCO BAY SECTION  
California Water Environment Association

## CWEA San Francisco Bay Section/Redwood September 2008 Joint Dinner Meeting

**Featuring:** Tour of the USS Hornet, tour begins at 4 pm and is \$5 per person.  
Dinner Speaker is to be announced

**Where:** **Scott's Seafood**  
Jack London Square  
Lafayette, CA 94549  
(925) 283-3700

**Dinner:** \$35.00 CWEA Members  
\$45.00 Non-CWEA Members  
\$15.00 Students

**When:** **Thursday, September 11, 2008**  
5:00 – Board Meeting  
5:30 – Social Hour  
6:30 – Dinner  
7:30 – Presentation

**Choice of:** Shitake Crusted Chicken  
Wild Mushroom Ravioli  
Grilled Salmon Alla Bella

**Contact:** Email Giti Hervain of Fairfield Suisun Sanitation District at [gheravian@fssd.com](mailto:gheravian@fssd.com) for dinner reservations. Include your name, agency or company affiliation, and menu selection.

**Reservation deadline for Dinner Meeting is Friday, September 5, 2008.**

**REMEMBER – a reservation is a commitment to pay.**

### To the USS Hornet:

**From San Francisco:** Cross the Bay Bridge towards Oakland and follow the signs for 880 South/San Jose/ Alameda. Take the Broadway/Alameda exit and turn right at the bottom of the ramp onto 5th Street. Continue on 5th Street, staying on street level. At the Broadway intersection, veer to your left; the Webster Street Tube (tunnel) to Alameda is under the freeway. After emerging from the tube, continue on Webster Street to the first stoplight (Atlantic Ave/Ralph Appezzatto Memorial Pkwy). Turn right on Atlantic Avenue and continue straight into Alameda Point (formerly Naval Air Station Alameda), crossing Main Street. Continue to the T- intersection at the water. Turn left onto Ferry Point and proceed towards the cluster of large ships. (See De- tour instructions in the event of Tube closure.)

**From Sacramento and 80 Westbound:** Take 880 south and take the Broadway/Alameda exit. At the end of the ramp turn right onto 5th Street. Stay in the right lane. Continue on 5th Street, staying on street level. At the Broadway intersection, veer to your left; the Webster Street Tube (tunnel) to Alameda is under the freeway. After emerging from the Tube, continue on Webster Street to the first stoplight (Atlantic Ave/Ralph Appez- zatto Memorial Pkwy). Turn right on Atlantic Avenue and continue

straight into Alameda Point (formerly Naval Air Station Alameda), crossing Main Street. Continue to the T-intersection at the water. Turn left onto Ferry Point and proceed towards the cluster of large ships. (See Detour instructions in the event of Tube closure.)

**From Walnut Creek and 24 Westbound:** Take Highway 24 to 980 to downtown Oakland. Take the 11th/12th Street exit onto Brush Street. Proceed to 7th Street and turn left onto 7th Street. Turn right on Webster Street which will take you into the Webster Tube (tunnel) to Alameda. After emerging from the Tube, continue on Webster Street to the first stoplight (Atlantic Ave/Ralph Appezzatto Memorial Pkwy). Turn right on Atlantic and continue straight into Alameda Point (formerly Naval Air Station Alameda), crossing Main Street. Continue to the T-intersection at the water. Turn left onto Ferry Point and proceed towards the cluster of large ships. (See Detour instructions in the event of Tube closure.)

**From San Jose and 880 Northbound:** Proceed toward downtown Oakland and take the Broadway exit. At the end of the ramp, follow the signs to Alameda, turning right on Broadway and then immediately turning right on 7th Street. Go two blocks to Webster Street and turn right again, entering the Webster Tube (tunnel) to Alameda. (Alternate: Turn left on Broadway and left again to enter Tube under freeway overpass.) After emerging from the tube, continue on Webster Street to the first stoplight (Atlantic Ave/Ralph Appezzatto Memorial Pkwy). Turn right on Atlantic Avenue and continue straight into Alameda Point (formerly Naval Air Station Alameda), crossing Main Street. Continue to the T-intersection at the water. Turn left onto Ferry Point and proceed towards the cluster of large ships. (See Detour instructions in the event of Tube closure.)

### **To Scott's Seafood, Jack London Square**

#### **From The Hornet:**

Take a left of SkyHawk, Right on W. Pacific, Left on Main, Right onto Atlantic, Left onto Webster/ 260, 260 becomes Harrison, Right onto 7th, Slight Right onto Jackson, Take the 880 N ramp toward 980. Take the Broadway ramp, take the ramp toward Jack London Square, turn left on Broadway.

#### **From San Francisco:**

Take Bay Bridge headed to Oakland, Merge onto I 880 toward Alameda/San Jose, exit Broadway/ Alameda, right on 5th Street, right on Broadway, then four blocks to Jack London Square.

#### **From the South:**

Take 880 North to the Broadway exit; left on Broadway, then four blocks to Jack London Square.

#### **From the East:**

Take Highway 24 to 980 (downtown Oakland). Take the 11th/12th Street exit, go straight on Brush, left on 5th, right on Broadway, then four blocks to Jack London Square.

## *Parking*

There is a garage underneath Barnes and Noble and valet is also available on Broadway and Franklin street side. There is a seven story garage across from the movie theater on Washington street. Scott's validates the ticket which gives the "first hour" a discounted rate.

The cost of the workshop is **\$75.00** and includes a continental breakfast and lunch, plus work book, laminate tri-fold safety spec for carrying in the trucks, a laminated wallet certificate and 8 x 11 wall certificate. 5.5 Contact Hours will be awarded.

For Reservations Contact:

Tom Sains w/the City of Antioch

(925) 779-6962

[tsains@ci.antioch.ca.us](mailto:tsains@ci.antioch.ca.us)

Or call (925) 779-6950 and speak to Michelle or Tanya. Mention that you would like to register for the class.

**Pre-Registration is required no later than August 29, 2008.**

Mailed checks should be received no later than 09/01/08.

**Make checks payable to CWEA-SFBS and mail to: PO Box 5007, Antioch, CA 94531**

Interested in joining the Committee?  
Call Lenny Rather at (510) 276-4700

**This seminar is brought to you by  
The SFBS Collection System Committee**

**SFBS-CWEA  
PO BOX 5007  
Antioch, CA  
94531**



**COMPETENT  
PERSON  
TRAINING**  
New Requirements for Subsurface  
Locating  
**September 3, 2008**

**LOCATION:**  
City of Foster City  
Community Center  
1000 East Hillsdale Blvd.  
Foster City, CA 94404  
Wind Room (Upstairs)

Registration & Continental Breakfast  
7:30-8:00

### SEMINAR OBJECTIVES

- To save lives in the trenches.
- Develop familiarity with the Federal and State Standards Associated with excavation safety.

### TOPICS DISCUSSED

- OSHA General Requirements
- Requirements for protective systems
- Soil classification
- Selection of protective systems
- How to read tabulated data sheets
- Checklists / Resources

Adjourn

3:00

This program has been designed to provide your labor force with the classroom training which along with their field experience may enable them to become a "Competent Person" as defined by OSHA.

## "COMPETENT PERSON"

One who is capable of identifying existing or predictable hazards in the surroundings or working conditions which are unsanitary, hazardous, or dangerous to employees, and who has authorization to take prompt corrective measures to eliminate them.

**ANNUALLY, 100 TO 400 PEOPLE ARE KILLED BY CAVE-INS AND 1,000 TO 4,000 ARE INJURED. DON'T LET THIS HAPPEN TO YOUR EMPLOYEES**



### Directions

- From the 101 Freeway take 92 East - Exit at Mariners Island Blvd exit toward Edgewater Blvd. Turn Left onto Edgewater Blvd Turn Left onto E. Hillsdale Blvd. to 1000 East Hillsdale Blvd.
- From the San Mateo Bridge westbound take the first exit (N.Third/ Foster City Blvd). Veer right onto Chess Dr. - Right onto Foster City Blvd. - Right onto Hillsdale Blvd. Make U turn at Shell Blvd onto East Hillsdale to 1000 East Hillsdale Blvd

### **LOOK FOR CWEA SIGNS**

*Come join us for the 2<sup>nd</sup> annual CWEA –SFBS Collection System Technologies Vendor Faire at Union Sanitary District in Union City. Admission is FREE, but advanced reservations required.*

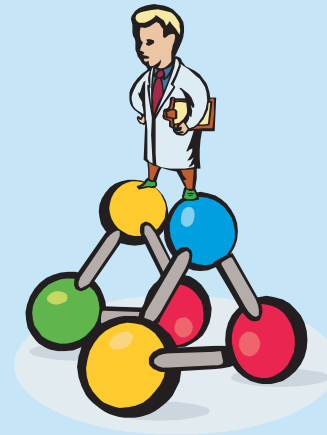
*For more information contact Tom Edwards from Duke's Root Control, Inc. at 800-769-8690 or email to [tom@dukes.com](mailto:tom@dukes.com)*

The CWEA Santa Clara Valley Section & San Francisco Bay Section Laboratory Committees sponsor: **Process Science & Troubleshooting for Wastewater Professionals**

This conference is designed for laboratory and operations staff to cover wastewater treatment process chemistry and microbiology, focusing on activated sludge, nitrification/denitrification, and anaerobic digestion from both a laboratory and operators perspective. Sampling and analysis will be discussed to demonstrate the ways in which laboratory analyses are used in operations, determining and maintaining process efficiency, and preventing and troubleshooting problems at wastewater treatment plants. Case studies will be used to illustrate process problems and how lab and operations staff worked together to solve them.

**Wednesday – Thursday  
October 8 & 9, 2008**

**HS Lordship's**  
199 Seawall Drive  
Berkeley, California 94710  
For directions call: (510) 843-2733



### Conference Schedule

#### Wednesday, October 8th — Day 1 - 6.5 contact hours

- 8:00 – 9:00 Registration
- 9:00 – 9:45 Introduction (Hughes/Gray)
- 9:45 – 10:00 Coffee break
- 10:00 – 12:00 General Wastewater Process Overview (Williamson/Hughes)
- 12:00 – 1:00 Lunch break
- 1:00 – 2:30 Activated Sludge Microbiology – Part I (Gray)
- 2:30 – 2:45 Break
- 2:45 – 4:00 Activated Sludge Microbiology – Part II (Gray)

#### Thursday, October 9th — Day 2 - 6.5 contact hours

- 8:30 – 9:00 Registration
- 9:00 – 10:15 Activated Sludge Process Control (Gray)
- 10:15 – 10:30 Coffee break
- 10:30 – 12:00 Nitrification/Denitrification Facility Applications (Gellerman)
- 12:00 – 1:00 Lunch break
- 1:00 – 2:15 Anaerobic Digestion (Fisher)
- 2:15 – 2:30 Break
- 2:30 – 3:45 Data Validation (Fisher)
- 3:45 – 4:00 Concluding Remarks

### Cost:

- Members:** \$150.00 for both days • \$100.00 for one day
- Non-Members:** \$172.00 for both days • \$112.00 for one day

**RSVP to Cassie Prudhel by September 30, 2008**  
(650) 829-3840 or [cassie.prudhel@ssf.net](mailto:cassie.prudhel@ssf.net)

### Lea Fisher Consultant

Lea Fisher is a private consultant specializing in wastewater facilities evaluation, planning, design, and operation. He was previously the Wastewater Discipline Director for a major international environmental firm, and has significant experience in biological treatment processes, solids handling processes, mechanical design, and process operation.

### Dennis Gellerman

#### RMC Water and Environment

Dennis Gellerman is a principal with RMC Water and Environment in San Jose California. He has 29 years of experience in wastewater treatment plant evaluation, planning, design and construction. He has been the project manager for a number of nitrification/ denitrification capacity evaluations, studies and design for oxidation ditch, SBR, MBR, and conventional activated sludge processes.

### Randall Gray – Truckee Meadows Water Reclamation Facility

Randall has 32 years of work experience operating and managing advanced wastewater treatment facilities and has been a certified operator since 1974. This work experience includes serving as the facility manager of the Truckee Meadows Water Reclamation Facility for 15 years. This facility was one of the first treatment plants in the U.S. to have a very stringent TMDL based permit for total nitrogen.

### Stephanie Hughes Consultant

Stephanie Hughes is a consulting engineer and university lecturer with 18 years experience. Stephanie served 6 years as Source Control Manager for the City of Palo Alto Regional Water Quality Control Plant and has been active in CWEA and the Bay Area Pollution Prevention Group. A skilled trainer and lecturer, Stephanie is currently a faculty member at both San Jose State University and Santa Clara University.

### Rhea Williamson

#### California State University, East Bay

Rhea Williamson is the Associate Vice President for Research and Sponsored Programs at California State University, East Bay. During the past four years, she served as San Jose State's Associate Dean of Graduate Studies and Research. She has developed water quality monitoring plans for nutrients, sediments, and other potential contaminants to streams, creeks, rivers and reservoirs.



# 2009 CWEA

## San Francisco Bay Section

# Awards

**Nomination deadline:**  
**October 31, 2008**

Nomination forms available at  
[www.cwea.org/awards](http://www.cwea.org/awards).

Return completed nomination forms to:  
**Rick Chan**  
**Carollo Engineers**  
2700 Ygnacio Valley Road, Suite 300  
Walnut Creek, CA 94598

Winners will be presented at the  
**Bay Section Awards Banquet on**  
**January 23, 2009.**

There are over 20 categories for CWEA awards, which honor CWEA members and wastewater professionals in California. The program serves to recognize outstanding professional achievements within the waste water field, improve the professional status of all personnel working in the wastewater industry and related fields, and stimulate public awareness of the importance of wastewater treatment to public health and the water environment.

Awards are given at the local section level, and winners advance to state competition to be held at the Annual Conference in Palm Springs, CA between April 28 to May 1, 2009.

If you have any questions, please contact Rick Chan at 925-932-1710 or via email at [rchan@carollo.com](mailto:rchan@carollo.com).

### Categories:

Collection systems: Person of the Year

Collection systems: System of the Year  
Small, Medium, Large

Electrical/Instrumentation: Person of the Year

Engineering: Achievement of the Year

Engineering: Research of the Year

Gimmicks and Gadgets: Gimmick/Gadget of the Year

Laboratory: Person of the Year

Mechanical Technology: Mechanical Technician of  
the Year

Operations: Operator of the Year

Plant - Overall: Plant of the Year  
Small, Medium, Large

Plant Safety: Plant of the Year  
Small, Medium, Large

Pretreatment Pollution Prevention and Stormwater:  
Person of the Year

Public Education: Program of the Year

Supervisors: Supervisor of the Year

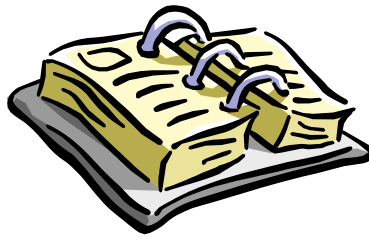
**... and more!**



SAN FRANCISCO BAY SECTION

California Water Environment Association





## SFBS CALENDAR

SEPTEMBER 2008	
3	<b>SFBS Collections Systems Committee, Competent Person Training, Foster City</b>
7-9	<b>Northern Regional Training Conference 2008, Sparks, Nevada</b>
11	<b>SFBS/RES Joint Dinner Meeting, Scott's Seafood, Oakland</b>
15-21	<b>Pollution Prevention Week</b>
23-24	<b>2008 CASQA Stormwater Conference, Oakland</b>
25-26	<b>APWA/SCVWD/EPA "The Fundamentals of Asset Management: A Hands-On Approach" Workshop, CVWD</b>
25-26	<b>Tri-State Seminar 2008, Primm, Nevada</b>
OCTOBER 2008	
2	<b>SFBS Dinner Meeting, Location TBD</b>
4	<b>Operations Certification Exam</b>
8-9	<b>SFBS/SCVS Lab Committee Seminar, Process Science and Troubleshooting for Wastewater Professionals, Hs. Lordships, Berkeley</b>
9	<b>SFBS O&amp;M Committee, Hands-On Training (E&amp;I), DDS D</b>
15	<b>CWEA Northern Safety Day 2008, Woodland, Ca</b>
18-22	<b>WEF Tech 08, Chicago, Illinois</b>
22	<b>SFBS Collections System Committee, Vendor Technology Faire, USD</b>
31	<b>SFBS Awards Nomination Deadline</b>
NOVEMBER 2008	
6	<b>SFBS Dinner Meeting, Location TBD</b>

---



---

**SF BAY SECTION BOARD OF DIRECTORS AND COMMITTEE CHAIRS**

<b>President</b> <a href="mailto:kotoole@whitleyburchett.com">kotoole@whitleyburchett.com</a>	<b>Kevin O'Toole</b> 925-945-6850	<b>Treasurer</b> <a href="mailto:kjk@vaengr.com">kjk@vaengr.com</a>	<b>Kevin Krajewski</b> 510-903-6600
<b>Vice President</b> <a href="mailto:fwedingt@ebmud.com">fwedingt@ebmud.com</a>	<b>Florence Wedington</b> 510-287-1625	<b>Membership</b> <a href="mailto:fioruccirw@bv.com">fioruccirw@bv.com</a>	<b>Randy Fiorucci</b> 925-949-5950
<b>1<sup>st</sup> Year Director</b> <a href="mailto:cwea_pv@yahoo.com">cwea_pv@yahoo.com</a>	<b>Polly Vilarreal</b> 510-772-0766	<b>O &amp; M Exchange</b> <a href="mailto:Greg.DeBois@LEE-RO.com">Greg.DeBois@LEE-RO.com</a>	<b>Greg DeBois</b> 925-937-4050
<b>2<sup>nd</sup> Year Director</b> <a href="mailto:mtakemoto@rmcwater.com">mtakemoto@rmcwater.com</a>	<b>Mark Takemoto</b> 925-627-4100	<b>Professional Development</b> <a href="mailto:mherston@fssd.com">mherston@fssd.com</a>	<b>Meg Herston</b> 707-428-9109
<b>Past President/Awards Chair</b> <a href="mailto:rchan@carollo.com">rchan@carollo.com</a>	<b>Rick Chan</b> 925-932-1710	<b>Safety</b> <a href="mailto:lgonzalez@centralsan.dst.ca.us">lgonzalez@centralsan.dst.ca.us</a>	<b>Leo Gonzalez</b> 925-229-0480
<b>Laboratory Committee</b> <b>Cassie Prudhel</b> <a href="mailto:cassie.prudhel@ssf.net">cassie.prudhel@ssf.net</a>	650-829-3840	<b>Student Activities</b> <b>Cynthia Cano</b> <a href="mailto:ccano@carollo.com">ccano@carollo.com</a>	925-932-1710
<b>Sara Sipes</b> <a href="mailto:ssipes@sbsa.org">ssipes@sbsa.org</a>	(650) 594-8411, ext. 154	<b>Sandie De Medeiros</b> <a href="mailto:DeMedeirosSL@cdm.com">DeMedeirosSL@cdm.com</a>	925-296-8031
<b>Communications</b> <a href="mailto:mtakemoto@rmcwater.com">mtakemoto@rmcwater.com</a>	<b>Mark Takemoto</b> 925-627-4100	<b>TCP Officer</b> <a href="mailto:santosac@worldnet.att.net">santosac@worldnet.att.net</a>	<b>Angelino Santos</b> 510-481-6996
<b>Newsletter Editor</b> <a href="mailto:bealls@rodeosan.org">bealls@rodeosan.org</a>	<b>Steve Beall</b> 510-799-2970	<b>Collection System</b> <a href="mailto:tom_herlihy@unionsanitary.com">tom_herlihy@unionsanitary.com</a>	<b>Tom Herlihy</b> 510-276-4700

**San Francisco Bay Section/CWEA**  
**2999 Oak Road, Suite 490**  
**Walnut Creek, CA 94597**